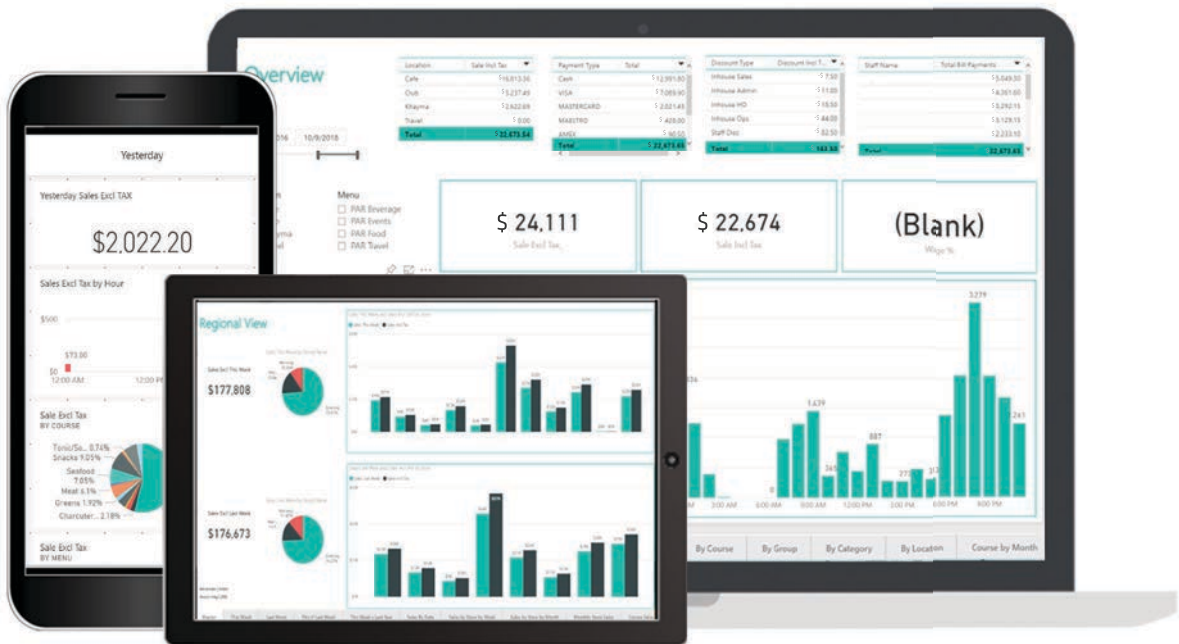


MENUMATE ONLINE REPORTS

May 2018 Release



Menumate Online Reports

Menumate is pleased to bring you the latest in cloud reporting technology. Menumate Online Reports uses the power of Microsoft Power BI to deliver sales and business analysis directly to your laptop or phone.

Menumate Online Reports allows you to monitor your sales, wage costs, wastage and staff performance.

Menumate Online Reports is available with two views:

- A store/site view perfect for the business owner or manager.
- A head office view where all reports are consolidated for site by site comparisons and a total business overview.

Menumate Online Reports is available for all versions of Menumate.

Please email sales@menumate.com for more information.

For more information

May 2018 Release

MenuMate Online Reports May 2018 release contains several new reports and comparisons

- **Sales by Staff/Waiter:** There are two reports in MenuMate Online Reports relating to staff sales. The current report is Billing where you can review which staff members are taking payments, applying discounts or authorising refunds. The new report, called By Staff, allows you to review which staff members are making the sales, the items they are selling and their product mix.
- **This Week V This Week Last Year:** We have added a comparison in the regional view (reports that consolidate across a group at head office) to compare the sales performance of all stores this week v this week last year.

This Week V Last Year

Sales Incl This Week This Year

\$49,831.70

Sales Incl This Week This Year

Store	Monday	Tuesday	Wednesday	Thursday	Total
MenuMate 1	\$1,379.12	\$2,176.08	\$6,797.31	\$2,774.97	\$13,127.48
MenuMate 2		\$5,379.20	\$1,798.30	\$4,288.99	\$11,466.49
MenuMate 3	\$3,913.80	\$1,909.83	\$1,760.47	\$3,111.67	\$10,695.77
MenuMate 4	\$4,790.50	\$4,760.13	\$4,991.33		\$14,541.96
Total	\$10,083.42	\$14,255.24	\$15,317.41	\$10,175.63	\$49,831.70

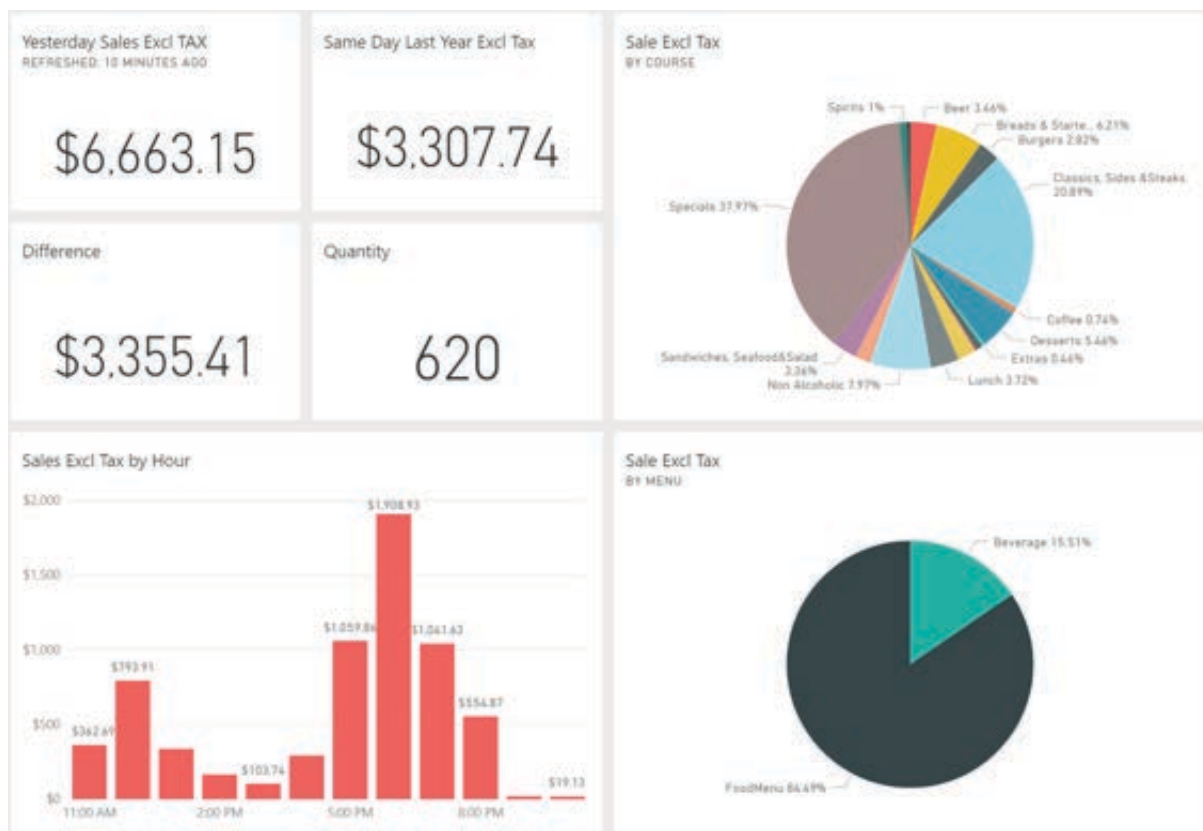
Sales Incl Tax This Week Last Year

\$31,056.70

Sales Incl Tax This Week Last Year

Store	Monday	Tuesday	Wednesday	Thursday	Total
MenuMate 1	\$1,435.12	\$3,457.08	\$2,737.31	\$2,234.97	\$9,864.48
MenuMate 2		\$1,120.20	\$1,548.30	\$2,288.99	\$4,957.49
MenuMate 3	\$2,767.80	\$1,253.83	\$1,340.47	\$1,511.67	\$6873.77
MenuMate 4	\$4,500.50	\$2,989.13	\$1,871.33		\$9,360.96
Total	\$8,703.42	\$8,820.24	\$7,497.41	\$6,035.63	\$31,056.70

- Consistent Date Selection Across All Reports:** Microsoft's Power BI March release created the ability to lock the date selected (date from/date to) across all reports. We have included this new feature in the May release of MenuMate Online Reports. Now when you select a date from and date to on a report, ALL reports will now use that date range allowing you to compare figures faster.
- Dashboards:** A dashboard is a set of simple key indicators that quickly allows you to review sites performance. The May release comes with a dashboard that shows yesterdays figures. If you would like specific information across several reports fast and without reviewing multiple reports then a dashboard can be created for you. Your account manager can consult on what you would like to see. Key indicators you may wish have are Sales, Discounts, Refunds, Wage Costs, Write Offs and Hourly Sales. The dashboards are also mobile friendly to give you clear information on your laptop/computer and mobile phone.
- Same Day Last Year:** We have added a comparison between your sales from yesterday and the same day last year.



- **Loyalty and Gift Card Reports:** Menumate Online Reports April release analyses LoyaltyMate data. We have added a suite of loyalty and gift card reports to this release. You can now analyse your loyalty database, their age, gender, rewards balance and gift cards balances & movements.



Coming in June 2018.

Work is currently underway on the June Release of Menumate Online Reports. This release will bring additional reporting and analysis to your business.

- **Gross Profit Reporting:** Adding the cost of sales, gross profit and gross profit percentage to the suite of reports and dashboards.
- **Member Sales:** For Menumate customers using the LoyaltyMate system we will be adding analysis of member sales and percentage of sales to members over all sales.

- **Point Movement:** If you are running a group or franchise using LoyaltyMate then it is important that you are balancing movement of points earned, points loaded, and rewards spent between stores.
- **Time Selection:** If you want to know what is selling between 4pm and 6pm for the month of March then you will be able to analyse this.
- **Operating Profit:** Knowing your key numbers is critical to a successful hospitality business. The June 2018 release of Menumate Online Reports will take your two largest costs with Cost of Sales and Wages to report your Operating Profit.



Want to see how Menumate Online Reports could benefit your business?

Please contact us at sales@menumate.com.