

howto



Setup for Web Ordering Interface

Setup for Web Ordering

MenuMate Registration

Open the clients registration account in Salesforce.

The screenshot displays the Salesforce user interface for a MenuMate Registration. The page title is 'MenuMate Registration: MenuMate Limited'. The main content area shows the registration details for 'MenuMate Limited', including the owner 'Tim Cathro', customer 'MenuMate', and various modules and interfaces. A table lists the registration history, showing a change in the MenuMate version from 5.1.0.17 to 5.1.0.21 on 18/03/2011 2:53 PM by Barry Cilliers.

MenuMate Registration Detail

MenuMate Registration	MenuMate Limited	Hand Held Module	<input checked="" type="checkbox"/>
Owner	Tim Cathro (Change)	EFTPOS	<input checked="" type="checkbox"/>
		Loyalty	<input checked="" type="checkbox"/>
Customer	MenuMate	Accounting Interface	<input checked="" type="checkbox"/>
Point of Sale Terminals	1	Time Tracking	<input checked="" type="checkbox"/>
Office Licenses	1	ChefMate	<input checked="" type="checkbox"/>
Office Scaling	1	Property Management	<input checked="" type="checkbox"/>
Hand Held Terminals	1	Rooms	<input checked="" type="checkbox"/>
		IntaMate	<input checked="" type="checkbox"/>
		Summa Live	<input checked="" type="checkbox"/>
		Web Ordering	<input checked="" type="checkbox"/>

Registration Details

MenuMate Version	5.1.0.21	Registration Keys	8B05E721E0E3B2C6796D30545992C55000 3C08C1856D3D0CC1A1A5F98ED2F4CAA0001 C6A1AEDE6877505AEB5485549668611F002
Keys From Customer System	C689DC6FE969DB95F97BDB1EF4C4C85E000 AE4016EDF38B471C30B3B861C69FFC73001 CE014A6FAA6507E70DE0E8778E1FF7DE002	Created By	Tim Cathro, 17/02/2011 9:39 AM
		Last Modified By	Barry Cilliers, 18/03/2011 2:53 PM

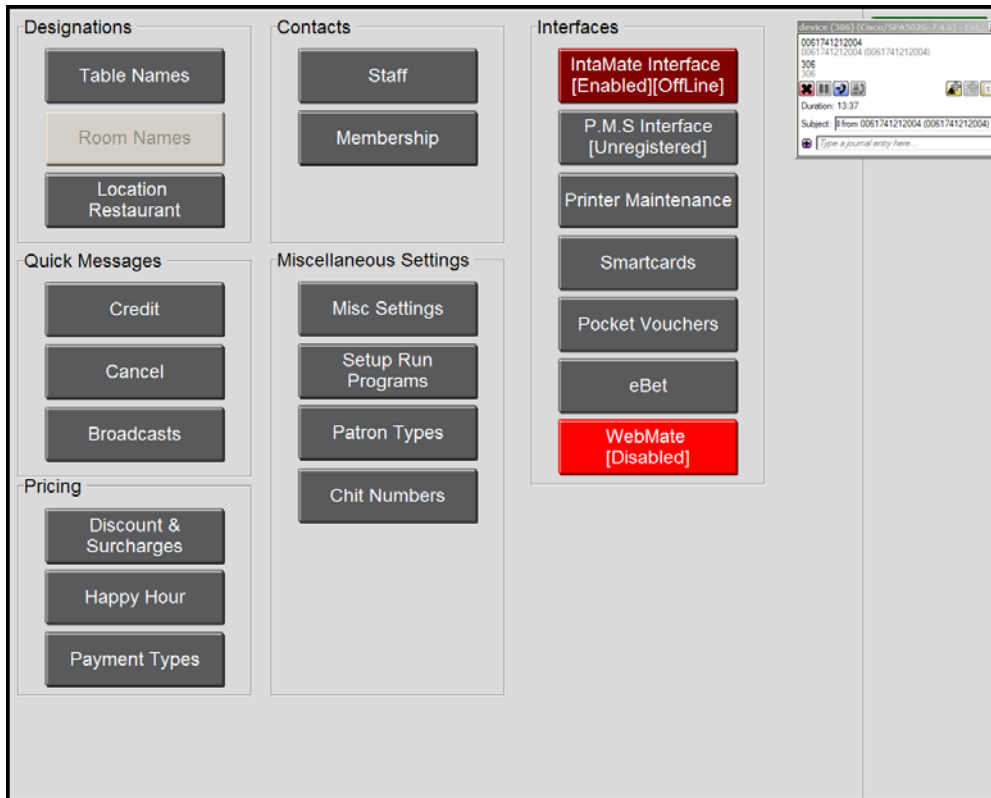
MenuMate Registration History

Date	User	Action
18/03/2011 2:53 PM	Barry Cilliers	Changed MenuMate Version from 5.1.0.17 to 5.1.0.21.
17/02/2011 9:39 AM	Tim Cathro	Created.

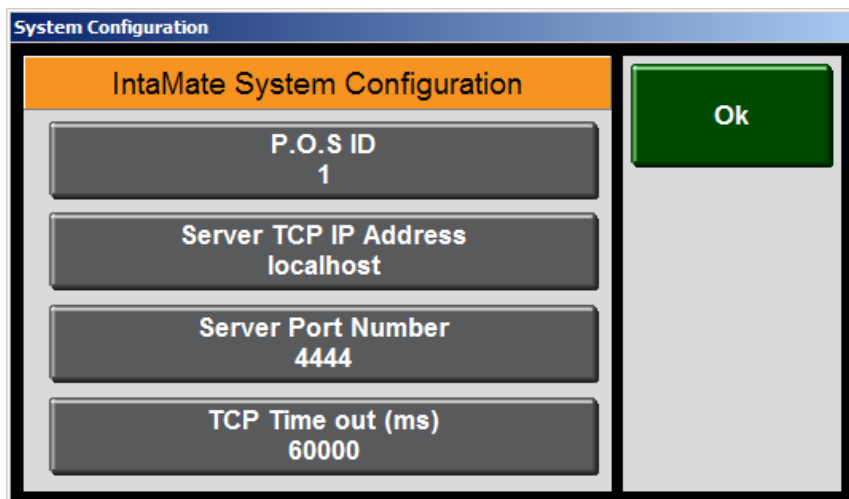
Ensure Intamate & Web Ordering is ticked (or tick if not) and then register the clients system to activate Web Ordering.

MenuMate Point of Sale Configuration

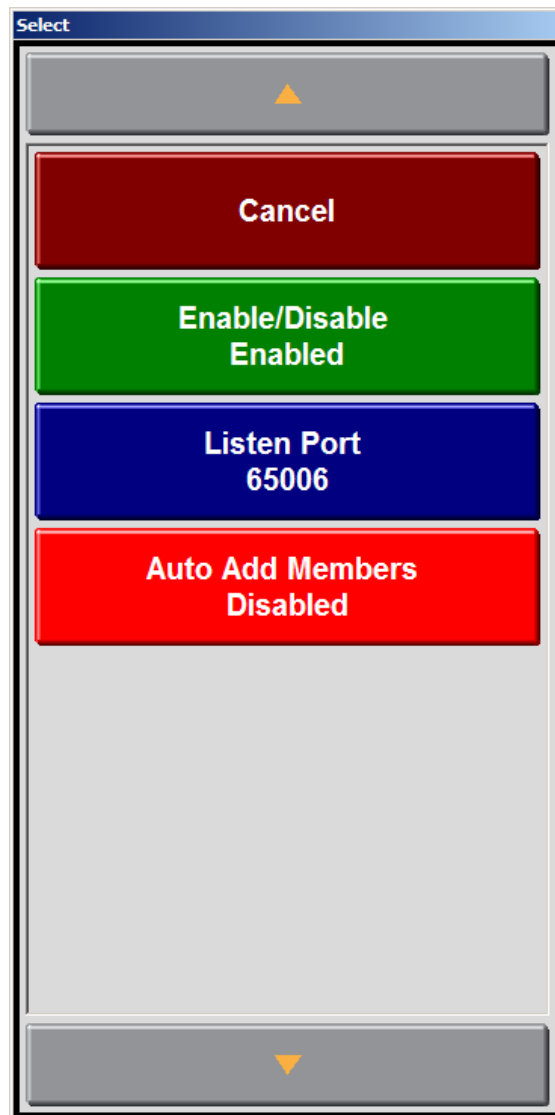
Start MenuMate POS and click on Maintenance. After the re-registration, the Intamate and WebMate options will be selectable.



Click on Intamate Interface and configure the settings below. Ensure that each POS terminal has a different P.O.S ID. E.g., POS1 = 1, POS2 = 2 etc.



Click on the Webmate button and ensure the listing port is set to 65006 and click on Enable.



Click on Intamate and Click Export Products Tab



Close Menumate POS and open the folder C:\Program Files\MenuMate\Intamate\Cache. Remove the file List_Product_Export_year-month_date.xml



List Product Export 2011-Jul-15 06-04-19.xml

This file is required by the Web Ordering Company to setup their own product file that will link to Menumate.